

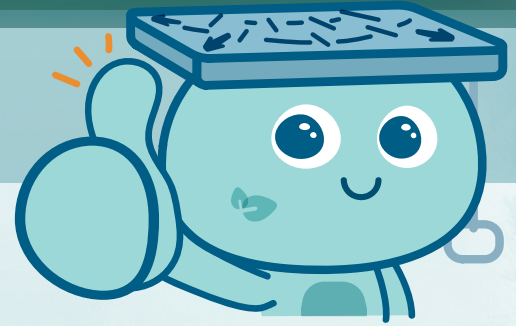


New Location of Diffuser
新污水排放位置

Construction of 1.8 km Long Submarine Outfall
建造1.8公里新海底排放管道

Existing Sha Tau Kok Sewage Treatment Works
現有沙頭角污水處理廠

工程通訊 第七期 Newsletter Issue 7



已完成工程 Works Completed Recently

海底排放管建造工程已於2022年第一季順利完成
Successful Completion of Submarine Outfall Construction in First Quarter of 2022



工程獎項 Prizes and Awards

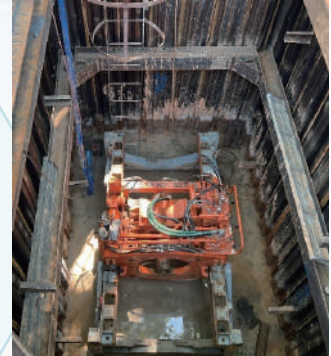
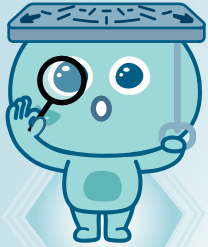
本工程榮獲第二十屆香港職安健改善項目大獎 - 銀獎
The Project obtained 20th Hong Kong OSH Enhancement Program Award - Silver



最新工程進度

Latest Progress of Construction

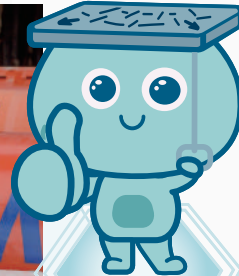
塘肚村鋪設管道
Sewerage Works at Tong To Village



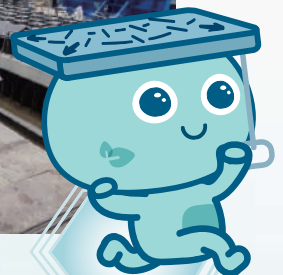
沙頭角區鋪設管道
Sewage Pipe Laying at Sha Tau Kok Town



新污水處理廠挖掘及側向支撐安裝工程
Excavation and Lateral Support Works for New Sewage Treatment Works



新污水處理廠組件場外組裝
Off-site Fabrication of Components for New Sewage Treatment Works



智慧及綠色工程

Smart and Green Construction

項目團隊一直注重工地環境，訂立「智慧及綠色工程」概念，以減少工程對環境造成的影響及碳排放。有見及此，我們採用無坑非浚挖方法建造新海底排放管道及場外預製組件方法建造新污水處理廠。

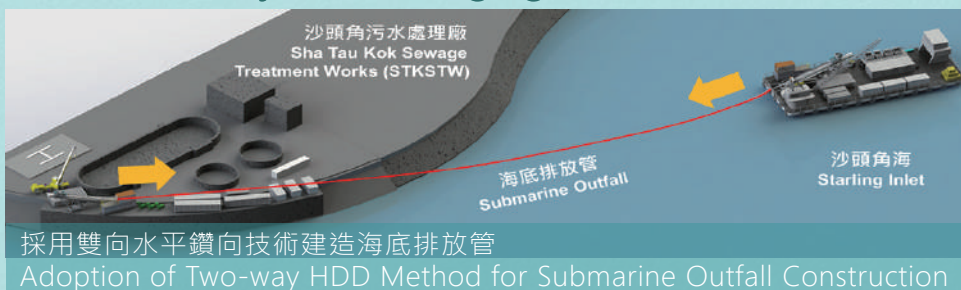
The Project Team focuses on-site environment, and establishes "Smart and Green Construction" concept to minimize environmental impact and reduce carbon emission due to the construction. As a result, we adopted non-dredging trenchless method to construct submarine outfall, as well as off-site prefabrication to construct new sewage treatment works.



採用無坑非浚挖方法建造新海底排放管道

Construction of New Submarine Outfall by Non-dredging Trenchless Method

為大幅度避免施工對海洋生態資源造成影響及避免直接挖掘海床，本工程採用無坑非浚挖方法 - 雙向水平鑽向技術建造長度1.7公里的海底排放管，並於海床石層下鑽挖，確保不影響水質。雙向水平鑽向技術更可縮短施工時間，減低工程對環境的影響。



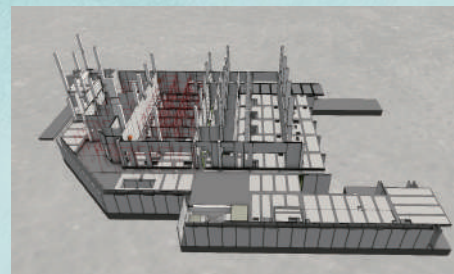
To minimize the effect to the marine ecological resources and avoid the disturbance to the existing seabed due to the construction, the Project adopts non-dredging trenchless method - two-way horizontal directional drilling (HDD) method to construct the 1.7km long submarine outfall below seabed level, such that water quality could not be affected. Two-way HDD method could also shorten construction period, in order to reduce the impact to the environment due to the construction.

採用了可供製造及裝配設計建造新污水處理廠

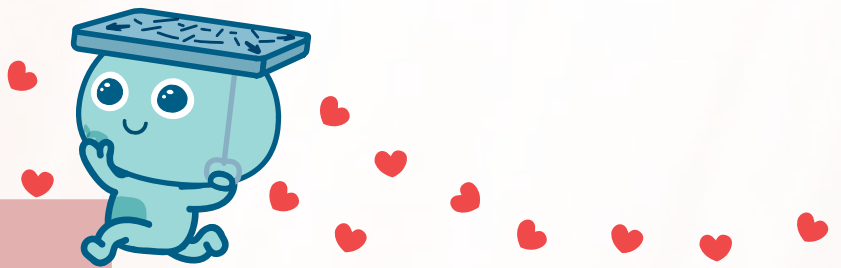
Construction of New Sewage Treatment Works by Design for Manufacture and Assembly (DfMA) Approach

DfMA 能夠在場外預製件工場製造高質量的建築預製件，並在工地現場高效進行組裝。這之有效的方法可顯著提高生產力、安全性、質量和可持續性。例如，該項目採用了一種創新的半預製鋼筋混凝土地板系統 (Matrix-Deck)。MatrixDeck運用創新的建築物料(void former)以代替樓板中間結構上不必要的混凝土，從而實現了輕量化的設計，減少建築廢料對環境造成的污染及碳排放。

DfMA enables off-site manufacture of high-quality construction components and efficient assembly of the components on site. It is a well-established approach for accomplishing significant improvements in productivity, safety, quality and sustainability. For example, MatrixDeck, an innovative semi-precast reinforced concrete flooring system, is adopted. It replaces the structural unnecessary concrete mass in the middle of slabs by void formers, leading to a lightweight, modular design, minimizing environmental impact and carbon emission due to construction waste.



社區關懷 Community Caring



定期消毒及滅蚊工作 Regular Disinfection and Pest Control

為對抗新型冠狀病毒第五波疫情及防止蚊患滋生，項目團隊為工地及工地周邊環境進行定期消毒及滅蚊和滅蟲工作，保護公眾衛生及環境。

In order to fight against the fifth wave of the COVID-19 epidemic and eliminate mosquito breeding, the Project Team has regularly carried out disinfection and pest control at and nearby site areas to protect public health and environment.



**建造業
魯班飯**

向弱勢社群
送贈飯盒

日期: 逢周五傍晚
(假期除外)

地點: 全港18區指定地方

魯班服務月2022 Lo Pan Service Month 2022

項目團隊一直致力參與義工服務，以發揮建造業義工「建義勇為」的精神，展現業界的關愛齊心的一面。在2022年，項目團隊便參加了建造業運動及義工計劃 (CISVP) 所組織的「魯班服務月2022」-「建造業魯班飯行動」。

The Project Team strives to participate in various volunteering services and contribute to the society with own strengths. In 2022, the Project Team has participated "Construction Industry Lo Pan Rice Campaign" for "Lo Pan Service Month 2022" organised by Construction Industry Sports & Volunteering Programme (CISVP).

與沙頭角社區聯繫 Connection with Sha Tau Kok Community

渠務署KOL - 「下水水」準備在第五波疫情緩和後於沙頭角中心小學舉辦工作坊，透過遊戲和活動，讓學生及家長了解沙頭角污水處理廠的日常運作及認識渠務署的願景、使命和價值。

Our KOL of the Drainage Services Department - "Drainy" is ready to introduce the daily operation of Sha Tau Kok Sewage Treatment Works and the visions, missions and values of Drainage Services Department to the students and parents of the STK Central Primary School after the 5th wave of Covid is eased.



聯絡我們 Contact Us

顧問公司
賓尼士工程顧問有限公司
Binnies Hong Kong Limited

承建商 Contractor
利基金城聯營
Build King - Kum Shing Joint Venture

設計 Designed by
Zoe LEE

電郵 Email
enquiry@dc1803.com.hk

24小時熱線 24-hour Hotline
(852) 6530 1973

